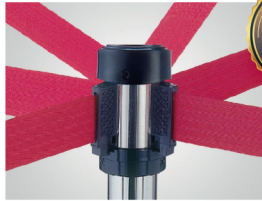
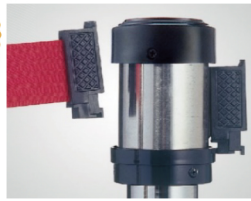


⊙ All-way (Belt Length:2m)

All-way (Multi-directional)



Flexible safety hook



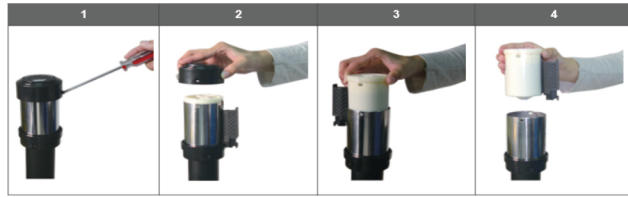
■ Belt can be connected to any angle. (360 degree groove design)

■ Flexible safety hook structure can avoid sudden belt releasing.

■ Maximum connection:

14 hooks (at the same time)

Easy to change cassette



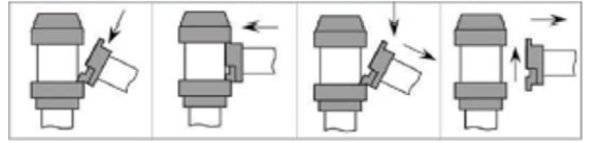
Patent:

US6,776,398B1(USA), 226346(TAIWAN)

ZL 03 2 65882.6 (CHINA), 3114574(JAPAN)

U200502642(SPAIIN)

■ Belt connecting/ releasing way



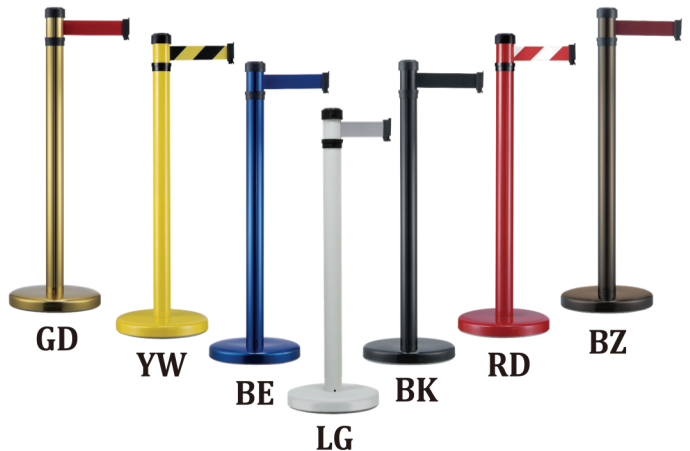
Item No.	Head	Post	Base	Height	Weight
RS-A2	Φ63.5mm	Φ50.8mm	Φ330mm	990mm	8kg
RS-258	Φ63.5mm	Φ50.8mm	Φ330mm	990mm	6kg
RS-206	Φ63.5mm in one piece		Φ330mm	1000mm	8kg
RS-216	Φ63.5mm in one piece		Φ360mm	1000mm	10kg

■ RS-A2 Series [Standard]

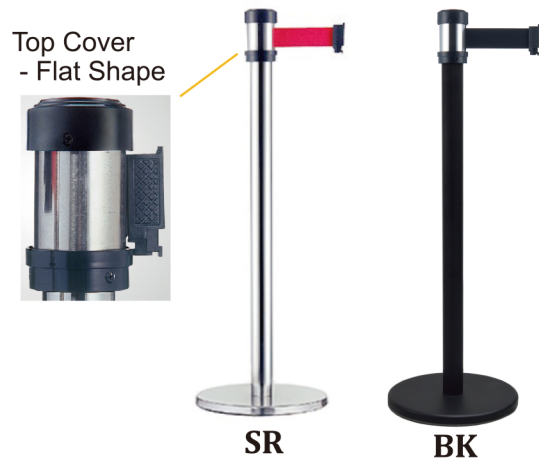


■ RS-206 Series [Aluminum]

Colorful



■ RS-258 Series [Economic]



■ RS-216 Series [Aluminum]

Heavy Base

